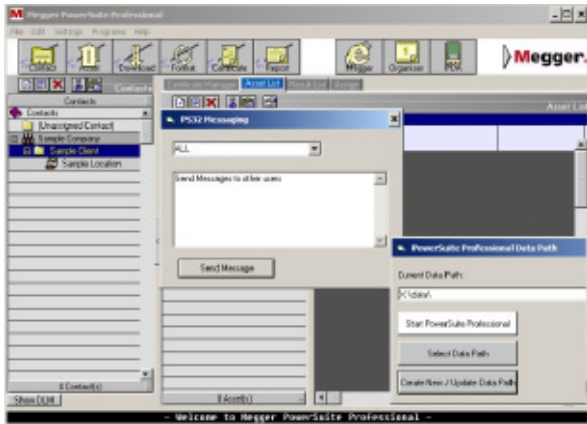


# PowerSuite® Professional SME Networking solution



- **Multiple concurrent user access**
- **4 security access levels**
- **Single and multiple data folder options**
- **Server based data security**
- **Certificate export and import**
- **Customer data integrity**
- **Simplified data protection act compliance**

## DESCRIPTION

PowerSuite Professional SME is designed as a single data server and a multiple client access application. This package provides the same level of features, functionality, certificates and reports as those in the PowerSuite Professional Power package. However, the PowerSuite Professional SME additionally provides the control and protection of operating a database across a network where a single user or several operators may need to access the same data. These are referred to as concurrent users.

The benefits of using PowerSuite Professional on a server include:

- A single data source prevents the creation of multiple databases and significantly reduces data management problems.
- Periodic server backups ensure valuable data is always protected and recoverable.
- Data integrity during multiple concurrent user access to the same client database records, ensures no accidental data corruption.
- Server based data security.
- Four security access levels ensure each user has the appropriate level of access most suitable for their needs.
- Multiple data folders provide separation of company and client data, as required. This simplifies client details in the user interface screen, which allows users to work on different data sets.

With a server-based database, the integrity of the data is maintained without the risk of working on out-of-date information or duplicate customer records.

The need to meet the requirements of the Data Protection Act is simplified as all customer records are held in a single location.

Additional features of PowerSuite Professional SME include:

### ■ **Multiple concurrent user access**

Client records are accessible by multiple users who may occasionally try to access the same data. If one or more users are working on PowerSuite Professional SME, all will gain access unless one or more try to open the same customer record. In which case only the first will succeed, preventing the others from accessing this information.

### ■ **User access levels**

Each user can be configured with one of four levels of access by the Network Administrator. Access rights can be updated as required.

### ■ **Messaging facility to other users:**

To prevent data corruption, any customer records already open by a user will generate a warning message if an attempt is made to open it by a second user.

PowerSuite Professional SME can send a message to the user of the open file requesting access.

### **Download Manager**

This program manages the transfer of data between the test instruments and PowerSuite Professional prior to sorting the results and placing them on the server. This is installed

on each client PC automatically and if required, can be configured to support all instruments or just a restricted range, relevant to the particular operator.

### Data entry options

Data entry into PowerSuite Professional can be via keyboard on a PC or by downloading test results from electrical testers. Megger support a range of third party instruments as well as our own downloading range.

Megger supported instruments include:

### PAT Testing

Megger PAT4/3DV  
Megger PAT4/3DVF  
Megger PAT4 EURO  
Megger PAT4 E

### Electrical Testing

Megger CM500  
Megger LTW335  
Megger RCDT 330  
Megger MIT330  
Megger BMM & LCB  
Megger MFT1553  
Megger MFT1730

### Supported Networks

PowerSuite Professional runs on all standard Windows® network installations such as:

Windows NT  
Windows 2000  
Windows XP  
Windows Server 2003  
Windows Vista, 7

A shared data folder is required on the server with full read, write and create privileges for all users running PowerSuite Professional from a networked PC.

### What's installed where?

The PowerSuite Professional SME networking package comes complete with one user licence.

1. The SME package to be installed on a networked PC.
2. The data folders (dataset) to be set up on the server.
3. A single user to access the data.

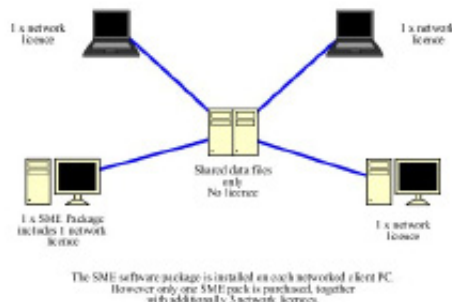
An additional PowerSuite Professional SME user licence must be purchased for each client PC.

The PowerSuite Professional SME (networking) software is installed on each client PC that requires access to the

PowerSuite Professional database.

Each PC is then directed to the shared data on the network server.

The Network Administrator will provide the necessary



permissions for each user to access the data.

## ADDITIONAL FEATURES

### Messaging

The PowerSuite Professional SME package offers users the ability to send each other messages whilst using the software. This could be something as simple as asking everyone to close the software for routine maintenance or to ask another user to come out of a locations details so that an important certificate or report can be opened.

## ORDERING INFORMATION

Item	Order Code
PowerSuite Professional SME	1000-636
Additional User Licence	6111-731

**MEGGER SOFTWARE**  
Archcliffe Road Dover  
CT17 9EN England  
T +44 (0) 1304 502106  
F +44 (0) 1304 207342  
E powersuite@megger.com

**OTHER TECHNICAL SALES OFFICES**  
Norristown USA, Sydney AUSTRALIA, Toronto CANADA, Trappes FRANCE,  
Dubai UAE, Mumbai INDIA, Durban SOUTH AFRICA, Conjure THAILAND,  
Tåby SWEDEN, Oberursel GERMANY, Aargau SWITZERLAND

Registered to ISO 9001:2008 Reg no. Q 09250  
Registered to ISO 14001-2004 Reg no. EMS 61597

**POWERSUITE\_SME\_DS\_en\_V04**

**www.megger.com**  
Megger is a registered trademark